



Dell XPS 15 L521X Battery Replacement

This guide will help you replace the battery for your Dell XPS 15 L521X

Written By: SHELDON SANTOS



INTRODUCTION

Changing the battery is pretty easy it only requires removing 6 screws and unplugging the battery. Be careful to not nick the wires to the right of the battery, if you keep this in mind this replacement will be quick and easy.



TOOLS:

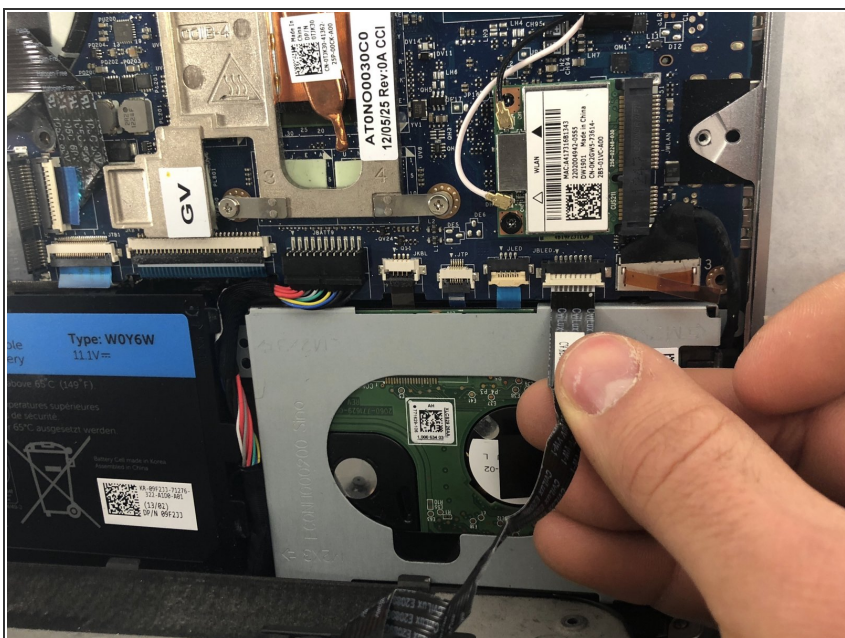
- [Phillips #0 Screwdriver](#) (1)
 - [T5 Torx Screwdriver](#) (1)
-

Step 1 — Back Panel



- Find and remove the two .3cm torx head screws using a T5 screwdriver.
- Find and remove the six Phillips head .3cm screws using a Phillips #0 screwdriver.

Step 2



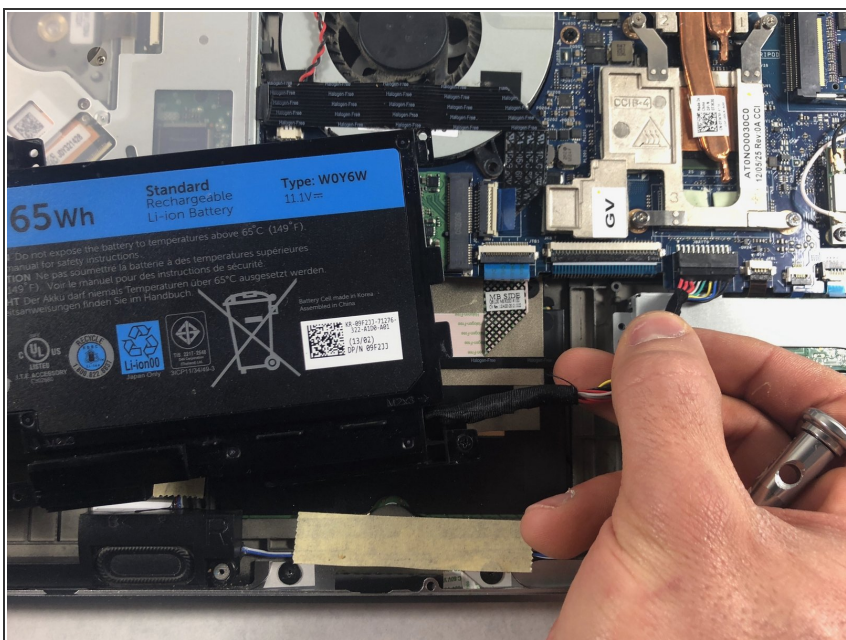
- Unplug the battery indicator.

Step 3 — Battery



- Find the battery
- Find and remove the 6 .4cm phillips head screws holding the battery in place

Step 4



- Unplug the battery, as shown in the picture

To reassemble your device, follow these instructions in reverse order.